



Principal's Perspective

I would like to sincerely thank our parents, whānau, and caregivers for supporting the Academic Conference Day held last Thursday. With upwards of approximately 90% attendance the day was an outstanding success. Having an opportunity to discuss students' academic progress, and identifying the steps that can be taken to support and improve their achievement is critical to their ongoing success.

As a school we are hugely appreciative of your commitment to the shared responsibility of supporting our students to achieve to the best of their ability.

Friday's Teacher Only Day was focused on Kia Eke Panuku, building on success. Through the development of cultural responsiveness and relational pedagogies we aim to increase the achievement of our Maori students. The strategies we are exploring will benefit all students in our school. Evidence strongly suggests that as we increase connectivity between staff and students we will also increase learning outcomes. This was a really positive day for our staff.

Jeff Smith
Principal

Sad Passing of Martin Jones

Dear Families/Caregivers/Community,

It is with great sadness that I inform you that Martin Jones, (our Head of ESOL and Languages), who has been on sick leave this year due to illness, passed away on Thursday 2 June. He was surrounded by his family, and close friends.

This is a very difficult time for all. Martin has been a highly valued and well respected staff member here since 2005. His contribution to school life has been immense and he has impacted on the lives of many of our students and staff. We all share in this huge sense of loss.

Our thoughts and deepest sympathy are very much with his wife, two sons, and wider family at this time.

Papanui High School will finish at 12.00pm on Tuesday 7 June to allow staff and students the opportunity to attend the funeral. (We apologise for the short notice, due to the funeral arrangements being confirmed on Friday 3 June, on a teacher only day)

**The funeral service will be held at St Gregory's Catholic Church,
26 Cotswold Avenue, Bishopdale
At 1.00pm, Tuesday 7 June**

We thank you for your understanding and support at this very difficult time for all.

Jeff Smith
Principal
Papanui High School

Year 10

The talent the Year 10 cohort has frequently amazes me. This term we have had a student represent New Zealand in Rhythmic Gymnastics, a student who is about to head to the USA to take part in a cheerleading competition, students involved in Rally driving, and of course the number of amazing dancers who participated in the Stage Challenge, representing Papanui, and trying to get across an important global message. This does not include those that represent the school every Wednesday and Saturday in their chosen sports. I had the pleasure of attending one of these games on Saturday watching the Mustangs play, and was impressed with the level of skill they possess, as well as most importantly, the sportsmanship they displayed. It made me proud to be the Dean of most of these young men.

The talent is obvious regularly inside the classroom. No better example was the student work, and guides that were ambassadors for our Open Night. The enthusiasm and pride they showed for Papanui was evident, and the community made many positive comments about the school, and the students.

My hope is after Conference Day, receiving the feedback from their subjects, will give the students something to work for and focus on, for the rest of the term and year.

Tanya Sapwell
Year 10 Dean

A team of 116 Papanui students took part in this year's RAW division Stage Challenge at Horncastle Arena. Their powerful story, Blood in our Hands, had a recycling message that wowed the audience and judges alike. They received 6 Excellence awards, and 2nd place overall.



The Week Ahead

Monday 6	QUEENS BIRTHDAY – SCHOOL CLOSED
Tuesday 7	Music @ Methodist church OE32F – 1 st Aid Arts Week – Theatresports (lunchtime) Y12 Drama production – 7.00pm
Wednesday 8	Jnr - 2 weekly Engagement reports OE32F – 1 st Aid Arts Week – Concert in the Courtyard (lunchtime) Y12 Drama production – 7.00pm
Thursday 9	Y12 Classics Day – UC OE32F – 1 st Aid Arts Week – Kapa haka (lunchtime)
Friday 10	Mufti Day – 40 hr famine 40 hour famine begins Y11 NCEA Music performance Arts Week – Open mic (lunchtime)
Saturday 11	40 hour famine
Sunday 12	40 hour famine Big Bang percussion competition

Reader / Writers Wanted

The Library is looking for more adult volunteers willing to act as reader/writers for individual students from Year 9 to Year 13, during internal assessments throughout the year, school exams, and for NCEA end-of-year exams.

No previous experience is necessary, and on-the-job training will be given. It can be very rewarding to support these students who might otherwise not achieve success.

If you have a spare hour or two, occasionally on weekdays, and you would like to help, please contact Phyllis Bennett or Barbara Mathias on 352-6119 ext.834.

University Information Evening

Victoria University - Thursday June 19th at Chateau on the Park from 6.00pm - 8.00pm.

Presentation will discuss undergraduate programmes, entry requirements, scholarships campus life, and more.

Sport

It was a wild, wet, day at the Canterbury Secondary Schools' Cross Country Champs at Halswell Quarry on Tuesday. The conditions were miserable but it was great to see over 20 of our students competing.

Our best result was Goiteom Gebremedihin in the Senior Boys' race, which was the last race of the day. By that stage the course had turned to mud, and the creek that was trickling at the start of the day, became a knee deep river. Goiteom finished 4th in the Senior Boys' 4km, in a time of 13.08 minutes.

Due to the wet weather on Monday and Tuesday, sports fields were closed throughout Canterbury, and many Football and Rugby games were cancelled on Wednesday.

However, Badminton and Squash still took place, along with the Senior Boys' Football team that play in the premiere schools grade competition. The boys had an easy game this week against Linwood College, taking the game 8 points to nil. Sora Yoshida scored 4 of those points in the first half.

Our Squash team had its second win of the season against Unlimited, winning all 4 of their matches.

On Tuesday night the Senior A Boys' Basketball team had their first home game of the season. It was great to see the big crowd that had come to watch, and the support from the sideline pushed the boys to win 63-62 against a strong Middleton Grange side. Both teams fought till the dying seconds, but it was the home court advantage that played a significant role in the end.

Rugby Draw 4th June

U18 vs St Bede's at St Bede's (#1) at 1.00 pm

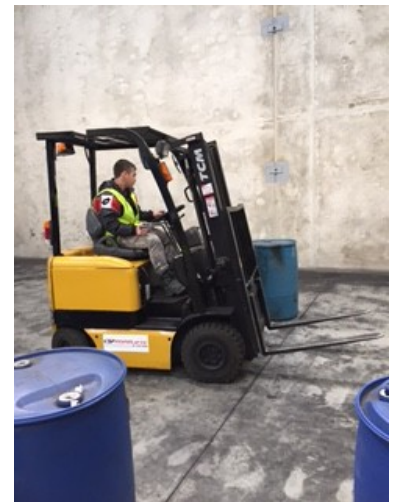
U14 vs Burnside at Burnside (#5) at 11.00 am

Please note that there are no Basketball games this Friday night due to the long weekend.

Hilary Jones
Sports Coordinator

Congratulations to Year 12 student, Raymond Tavinor who has completed a STAR (Secondary Tertiary Alignment Resource) Forklift Licence Course to help him with applying for Part time and full time work for the future.

The STAR programme is designed to help Year 11-13 students move smoothly from school into tertiary study or work.



PTA—Entertainment Book Fundraiser



Support our PTA's Entertainment Fundraiser today and get Early Bird Value

We're very excited to be fundraising with Entertainment™ this year. Order your NEW 2016 / 2017 Entertainment™ Books and Entertainment™ Digital Memberships from us today, and 20% of the proceeds contribute towards our fundraising!

Entertainment™ Memberships are packed with thousands of up to 50% OFF and 2-for-1 offers for the best local restaurants, café, attractions, hotel accommodation, travel, and much more!

ORDER FROM US TODAY

Available as a traditional Entertainment Book - or - Digital Membership on your smartphone, your Membership gives you over \$20,000 worth of valuable offers valid through to 1 June 2017!

Papanui High School PTA

Carolynne Som

candwsom@xtra.co.nz

Thank you for your support!

*My School, My Success, My Responsibility
Tōku Kura, Tōku Tiketike, Tōku Haepapa*