



Principal's Perspective

Kia Ora,

I am hopeful that the extended long weekend provided students with a well timed break, and an opportunity to recharge as we move in to the second half of this term.

Over the weekend a number of our students and staff will be supporting the 90,000 from around New Zealand who will be taking part in this year's 40 hour famine. This provides a great opportunity to think of others, and contribute to their welfare and wellbeing. This follows on from our school's commitment to serve our community and help others, which was strongly illustrated by a visit to Ronald McDonald House last week with 19 of our School Council reps presenting our annual donation in support of the Teenager Room (a full article follows below)

PPTA INDUSTRIAL ACTION

Last Thursday the Ministry of Education and PPTA re-started negotiations. This has enabled the industrial action of rostering Year 10 students home to be cancelled. We are all hopeful that these discussions will lead to a positive resolution as quickly as possible.

Next Monday signals the start of Semester 2 for our senior students, where many of them will begin new courses for the second half of their academic year. We wish them well during this transition, and encourage them to continue to achieve their personal best in all that they do, both in the classroom and beyond.

Jeff Smith
Principal

PPTA - INDUSTRIAL ACTION

Year 10 rostering home Tuesday 11th June CANCELLED. All Year 10 students are expected to attend school on Tuesday, alongside all the other year levels.

Ronald McDonald House

Last week, the Principal, Mr Smith and a group of students visited Ronald McDonald House. The students were made up of members of the Service Council, and Aleisha Hurd in Year 11, who has personally raised a significant amount of money for this facility. This event celebrated the 2018 school contribution of \$10,000. It was fantastic to raise this amount of money, which meets our annual target of support for the Teenager Room at their premises on Cashel Street.

At this celebration our students were able to further think about how they could design the Teenager Room to meet the needs of patients and their families. Students who had never been to this building before were also given a guided tour. An afternoon tea was provided, thanking our school for our contribution.



We look forward to continuing to support the Teenager Room at Ronald McDonald House in 2019 and beyond. The school is well under way with its 2019 contribution, thanks to the support from Senior Work Day in Week 2 of this term.

From the Art Department

Twenty-six students joined the annual Art History Trip to Wellington that took place May 17th and 18th this year.

Visiting Massey, Victoria and Toi Whakaari NZ Drama School, the students met with several ex-Papanui High School students and heard from them about what student life in Wellington has been like. The weather was good and



Polyphony is a youth exhibition initiative supported by Te Ora Hou. Again this year, Papanui High School students were invited to share an image and on the opening night, give a series of introduction speeches around the theme 'I am more than what you see'.

The Papanui High School Art Department students, Kate Bagshaw (Year 13), and Kyra Elliott (Year 12), represented their submissions well. Their works will be on display, installed on the large Papanui Public Library windows for the entire year.

Other Papanui High School students exhibiting are Arquead Marsden-Walker-Williams (Year 10), Tane MacDonald (Year 11), Gemma Hall (Year 11) and Zion Heitia-Brett (Year 9).



Results of the People's Choice awards for Creator's Room Exhibition

The Creators Room held their inaugural Exhibition on High School Student Artworks recently.

The results are in for the Blind Auction and the People's Choice Awards:

FIRST PLACE

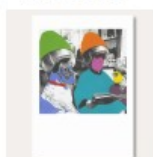


RUBY MCCALLUM
'The Breadmaker'
\$600.00 cash prize

SECOND EQUAL



ABBY BAILLIE
'Burnt'
\$200 cash prize



AIMEE SULLIVAN
'Pamper Day'
\$200 cash prize

Congratulations to current and past students; Abby Baillie and Aimee Sullivan were the People's Choice and both receive \$200 cash prizes.

Congratulations also to all the students whose work was in the blind auction including Geoffrey Symes-Laughton, Abby Baillie and Emma Kim.

Mark Soltero
Head of Department

Thank you again for the anonymous donation towards the The 2019 People's Choice award.

sPACIFICally PACIFIC Emerging Leaders Breakfast

Last Friday two of our Pasifika leaders attended the **sPACIFICally PACIFIC Emerging Leaders Breakfast** at the Christchurch City Council Buildings. The breakfast was organised to bring together the education and Pasifika communities to inspire and celebrate Pasifika identity, language, and culture. The celebration also aimed to strengthen the partnership that students, families, communities have with teachers, principals, tertiary providers, local and central government.

During the morning the **Emerging Leaders Breakfast** recognised those Pasifika students who have demonstrated leadership and service at the highest levels in their respective schools. Student voice was gathered to develop criteria for further celebrations at the end of the year. These celebrations will acknowledge two Pasifika students who continue to lead and serve their schools and wider community.

Pictured to the right are Erikah Taukeiaho and Nikhil Prakash after they received their acknowledgement.



Year 9

Thank you to all the parents and students who attended the Conference Day. For Year 9's we see it as such an important part of the transition to school and we appreciate getting to know our students whānau and caregivers. We are now busy writing junior reports and we look forward to see you all on Report Evening. The upcoming evening on July 4th will be a chance to further check and reflect on students progress at school.

Year 9's are well into the cold winter months now, so it is important that they are warm and dry. Please assist them in having the right jackets and shoes, and send them with a note if they do not have something they need.

At this time of year I am also seeing a lot of lateness from students in the mornings. We understand that it is cold, but we still need them here, on time, ready to start at 8.30am. Lateness results in a U - which means 15 minutes after school. Failure to do that results in lunch time deans detentions. Please assist the students to be here on time every day.

Congratulations on all the students involved in the Wellbeing walk / Cross country. It was pleasing to see the involvement and positive attitude from all the students involved.

An extra congratulations to our competitive winners who were:

Male - Vincent Thomas (11:50), Alex McDonald (11:55), Seth Hignett (12:18)

Female - Leah McCallum (12:09), Camryn-Lee Johns (13:15), Maia Oldfield (14:24)

Coming up very soon is our school production "Beauty and the Beast Jnr". This amazing event takes place from June 19th until the 22nd and features a number of Year 9's. Good luck to them, and well done on being involved in such an exciting event.

Lastly, I have been working hard with the students to create an inclusive and caring environment. Here at Papanui we treat others with respect, and bullying in any form is not accepted. We talk about a triangle of: NICE, NOTHING, NEVER NASTY. This means you are either kind to someone and friends with them (NICE), leave them alone if they are not someone you get along well with (NOTHING), but you are never mean, (NASTY).

Please support us to support the students, to create a place that all students have the confidence and wellbeing to succeed to their full potential.

He waka eke noa

A canoe which we are all in with no exception (We are all in this together)

Thanks for all your ongoing support

Jane Herman
Year 9 Dean

2019 School Production - Beauty and the Beast Jnr

Tickets are now on sale for this year's production of Beauty and the Beast Jnr. Tickets are available for purchase from the Student Office between 7.30am and 4.00pm Monday to Friday. Seating is allocated, so early purchasing is advised. This is shaping up to be a wonderful production and is suitable for all ages. Don't miss out!!

Adults \$20 pp. Concession \$10 pp (concessions include Gold Card, children and students with ID)

Opening night Wednesday 19th June 7.00pm, door sales from 6.30pm, access to seating from 6.45pm

Thursday 20th 7.00pm, door sales from 6.30pm, access to seating from 6.45pm

Friday 21st 7.00pm, door sales from 6.30pm, access to seating from 6.45pm

Saturday 22nd, Matinee performance 2.00pm, door sales from 1.30, access to seating from 1.45pm



School Policies

Our school has been working with SchoolDocs to create a website for our policies and procedures. We are excited to announce that the site is now live and available to our school community.

The school works on a subscription basis with SchoolDocs to maintain, update, and review our policies. SchoolDocs provides us with a comprehensive core set of policies which have been well researched and follow the Ministry of Education National Administration Guidelines. The policies and procedures are tailored to our school, and the school supplies specific information such as our charter, and procedures for behaviour management, reporting to parents, etc.

SchoolDocs updates, modifies, or creates policies in response to changes in legislation or Ministry guidelines, significant events, reviews/requests from schools, and regular reviewing from the SchoolDocs team. Our board of trustees has the opportunity to view changes/additions and comment on them before they are implemented. We will advise you when policies are up for review and how you can take part in the review.

We invite you to visit the site at <https://papanui.schooldocs.co.nz/> (note that there's no "www"!). Our username is papanui and password pride

Arbour Day at the Bridgestone Reserve

A group of Year 10 Outdoor Education students braved a very cold and frosty morning to take part in the annual Arbour Day activities at Bridgestone Reserve, adjacent to the school. The group first weeded around trees that were planted last year, with a couple of students able to check how their previous year's saplings were looking. The double glove system was well used to dig out competing grasses. A new load of plants was delivered and students then dug, planted and protected them, following a quick lesson from the City Council Park Rangers. It was impressive to see the teams getting involved to support the community effort to regenerate Papanui Bush to its pre-settlement glory. We hope to be able to utilise the space for collaborative and cross-curricular learning in the future.



Sport News

Student Achievements

Have you competed in a Sports Competition lately? Send your story and results (with pictures if possible) to Kirsten in the Sports Office – hik@papanui.school.nz

This is a great way to showcase what our students are doing outside of school in sport with our community.
School sports news

UC MUD RUN CHANGE OF DATE / TIME

The UC Education Secondary Schools Mud Run has had to change its date and is now being held on *Sunday 30th June from 8am – 11:30am (rather than the afternoon).*

The event is being held at a new location – The Christchurch Adventure Park, with teams consisting up to 4 High School students. Teams can be of 2 or 6 students but only teams on 4 will be eligible for prizes.

The event costs \$25 per student.

For those that are now interested to be involved due to the change in day/ time *registrations are open again until Tuesday 18th June at the Sports Office.* Students will be given the Sport Canterbury bank account to make payment directly to them.

Winter Sport Clothing Orders

The 2019 "optional" Winter sport clothing items are now available for purchase all year round via the links below. *(Summer options will be available later in the year).*

There are 3 items for students to buy; a Zip Hoodie (personalised options available), Long Sleeve Thermal Top and Long Sleeve Quick Dry Tee.

These items are for students to wear at games and/or to training. The items are not compulsory, and are not part of the daily school uniform, and as such are not to be worn to, from or during school.

Students may also wish to purchase a school cap, hat or beanie. These items are part of the school uniform and can be worn to, from and during school (but not indoors) as well as at games and training.

If you wish to purchase a hoodie, thermal or tee please complete your order with payment via the following link:
<https://withers-merch-shop.myshopify.com/collections/papanui-high-school-co-curricular>

If you wish to purchase a cap, hat or beanie please complete your order with payment via the following link:
<https://withers-merch-shop.myshopify.com/collections/papanui-high-school-uniform>

Please note that prices now include delivery.



Sport Results:

Football

Boys 1st XI – drew with Burnside 1-1 Goal Sam Richards

Girls 1st XI – were just defeated by Avonside

Basketball

In House Comp points table:

Team	Played	W	L	Bo-nus	Poi nts
Teachers	2	2		2	12
KimiOra	2	1	1		6
U17 A	2		2	4	4
U17 B	1	1		1	6
Senior A	2	2		2	12
Girls	2	1	1		5
Senior B	2	1	1		5
Senior C	2		2	2	2
Senior D	1	1		1	6
U15 A	2		2	2	2
U15 B	2	1	1	1	6
Papa Social Ballers	2	1	1		5

Netball

Year 9 Wednesday Team – beat St Margaret's 26-15

Year 10 Wednesday Team – beat St Margaret's 28-17

Rugby

Girls Team – were defeated by Christchurch Girls' High School

Important Dates/ Notices

- Senior Netball Tournament Trial Registrations close Friday 14th June – via email to hk@papanui.school.nz stating student name and positions or by visiting the Sports Office.
- NZ Secondary Schools' Cross Country Championships Saturday 15th June – Timaru.
- Canterbury Secondary Schools' Gymnastics/ Trampoline Championships Tuesday 18th June
- Registrations for the Mud Run Close Tuesday 18th June – event on Sunday 30th June.



Kirsten Hill
Head of Sport
hk@papanui.school.nz

The Week Ahead

SEMESTER 2 STARTS FOR SENIORS

Monday 10

Tuesday 11 Y13 Media – Censor for a day
SPA32S Swim day

Wednesday 12 Snr - 2 weekly engagement reports

Thursday 13 PTA second hand uniform sale

Friday 14 Rockquest
Bio31F trip - am

We're fundraising with


Support Papanui High School PTA!
Get your new Entertainment Membership today.

With the 2018 | 2019 Entertainment Membership about to expire, now is the perfect time to buy the brand new 2019 | 2020 Entertainment Membership! You can enjoy thousands of valuable offers for everything you love to do, all while supporting fundraising for Papanui High School PTA!

Purchase your 2019 | 2020 Entertainment Membership!

SUPPORT US NOW.

My School, My Success, My Responsibility
Tōku Kura, Tōku Tiketike, Tōku Haepapa