



Principal's Perspective

Kia ora,

This week has been a very welcomed return to the school setting for staff and students under the conditions of Alert Level 2. I am very grateful for everyone's support and understanding as we negotiate our way through this. Our students have been doing incredibly well, and are settling back into routines.

Thursday's return started with Form Time, which is part of our check and connect process. Class time has been a continuation of supporting wellbeing, assessing readiness to learn, and moving back into learning programmes. We have received some positive news for our senior students in relation to NCEA. A decision has now been made that the current 16 days of closure is now the point at which the Learning Recognition Credits (LRC) provision can be actioned. This has been amended for areas outside of Auckland, which means our students will receive 1 LRC for every 5 credits they have earned up to a maximum of 8 LRCs at Level 1, and 6 LRCs at Level 2 and 3. This comes in addition to the extension of two further weeks of learning time in Term 4 (ie the Senior External Exams will now begin at the later date of the 22nd of November). As we have not met the 20 day threshold, there is no changes to UE and Endorsement criteria.

As we are now operating under Alert Level 2 criteria, some changes have needed to be made to the daily routine. Year 13 students will be required to stay on site for their study periods during the school day. Year 12 and 13 students who have study first thing in the morning can arrive after that, and those who have it last in their school day can leave at that point (as per normal). To stagger the exit process at the end of each day, Year 9 and 10 students will be released at 2.25pm, and Years 11 to 13 at 2.30pm. Many of you will have noticed how congested Langdons and Sissons Roads are at about 2.30. This is not helped by road works on Langdons Road. Can I please reinforce that this congestion usually lasts for about 15 minutes and we appreciate your patience and understanding. We are trying to move everyone out as quickly and safely as possible.

We have been supporting Northlands Mall in their endeavour to manage their Health and Safety requirements, which includes limits to the number of people that can be in the mall at any one time. The Mall Management have asked us to remind students that they should only go in to the mall if they are there to purchase goods, and that under Alert Level 2 conditions they cannot take a short-cut through the mall to go to the bus stops.

We are currently reviewing the dates of a number of key events on our school calendar. This process will need to continue, as this will be influenced by the Ministry of Health's regulations associated with each Alert Level status. We will keep you informed of any changes as quickly as possible.

We look forward to the potential move to Alert Level 1 in the near future. But as we all have come to understand, and in particular with the Delta variant, things can change very quickly. This once again is a challenging time for our staff and students, and it is important to remember that everyone is trying to do the best they can, given their personal circumstances.

He waka eke noa – We are all in this together.

Ngā mihi nui
Jeff Smith
Principal

The Wearing of Face Coverings

Face coverings are not mandated for use when in schools.

However, the Director General of Health strongly encourages staff and students aged 12 and above to wear face coverings in secondary school settings to align with the requirements when out and about and indoor public places. It remains an option for individuals and a decision for the individuals and whānau. Whatever decisions students and staff make, it is their own to make and needs to be respected. Where an individual chooses to use a face covering they should supply and wear their own, and to do so safely.

Other PPE is not required or recommended as necessary in any educational facility by the Public Health Service.

'Art Stars' Exhibition - 2021 CHANGE OF DATE

VENUE: The Hereford to High Street Atrium

Entrances at 248-250 High Street (between Recycle Boutique & Head Over Heels) and 150 Hereford Street (beside City Fitness) (Ministry of Health regulations will be followed for the Alert Level at the time).

EXHIBITION NEW DATES: Saturday 25 September - Saturday 09 October
Daily 9.00am – 6.00pm



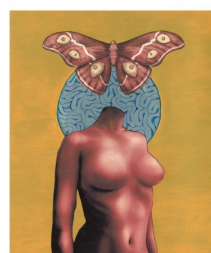
The Creators' Room offers a youth development programme available to young creatives aged 15-18 years to showcase their work and connect with our community of collectors. The programme currently receives over 2,000 submissions per year from young creatives. The Creators' Room provides upfront financial support, through the purchase and professional framing of the original artworks and funding the reproduction of limited edition prints.

Since its inception in 2018, The Creators' Room has provided upwards of \$210,000 in financial support to young Creator's in Canterbury alone. "As part of our mission to encourage continued participation in the arts, we award an annual scholarship to one deserving Creator, consisting of a \$3,000 cash contribution to help support the growth and development of their artistic career."

The scholarship is judged by an independent judging panel consisting of practising artists and art experts.

While the programme is currently only available in Canterbury, the opportunity will be made available to all Secondary Schools throughout Aotearoa in the coming years. Original work will be up for sale during the exhibition with prices ranging from \$200 - \$800. Twenty guest artists from around Canterbury will also be exhibiting alongside the students.

We have six students that feature in the upcoming 'Art Stars' Exhibition.



Artwork imagery of the participating students :

Jorja Shadbolt, Madilin Macpherson,
Emma Lilly, Emma Bainbridge, Theanine
Duvan, and Boston Beanland.

Become Digital Savvy for FREE with Ara Connect

Becoming 'digital savvy' is easy and **FREE** thanks to the school's partnership with Ara Connect. Now, you can learn how to use devices like smart phones and tablets, and gain skills in tools such as email, Word, Excel, PowerPoint and Google Docs for personal or professional use – right here at school. Ara Connect lets you study at your own pace and fit your learning around work, family and other commitments. To find out more or to enrol for your first class, phone Ara on 0800 24 24 76 or email araconnect@ara.ac.nz or visit <https://www.ara.ac.nz/study/community-study/>.



Become digital savvy with Ara Connect

Free and affordable computing courses, available here at PHS.

For details visit:
[ara.ac.nz/study/community-study](https://www.ara.ac.nz/study/community-study)

Riki
(Ngāti Porou, Ngāpuhi)
Ara graduate

Ara
Institute of Canterbury
Ara Te Kōwhiri

Reader/Writers and Special Assessment Condition Assistants wanted

The Library is looking for more adult volunteers willing to act as reader/writers and special assessment condition assistants for individual students from Year 9 to Year 13 during internal assessments for the remainder of the year, school exams, and for NCEA end-of-year exams.

No previous experience is necessary and on-the-job training will be given. It can be very rewarding to support these students who might otherwise not achieve success.

If you have a spare hour or two occasionally on weekdays and would like to help, please contact Phyllis Bennett or Barbara Mathias on 352-6119 ext.834.

School Policies

Our school policies can be found at <https://papanui.schooldocs.co.nz>

Username: papanui **password:** pride



*My School, My Success, My Responsibility
Tōku Kura, Tōku Tiketike, Tōku Haepapa*