



### Principal's Perspective

Kia ora,

It is my pleasure to welcome you all back, and also a very special welcome to our new parent/whānau community of our new Year 9's, transferring Year 10 - 13 students, adult ESOL students. Equally, I would like to welcome our new staff, and introduce you to Ms Stacey Fry our new Associate Principal. Ms Fry comes to us from Motueka High School, after being there for ten and a half years, eight years as Deputy Principal, and the last two years in the role of Associate Principal and Principal. Ms Fry brings to us a wealth of experience, and a real desire to help lead and support our school community. I hope the holiday period has provided an opportunity for students to have a restful and enjoyable break.



The first edition of the PapaCommunity News for 2022 brings us, probably expectedly, a start to the year under the continuing cloud of Covid-19, and more specifically the Omicron variant. The Government has actioned their 'traffic light' system, and the school is operating within these parameters. We will continue to update you all with the relevant information as we receive it. We are also planning and preparing for what may be a fairly disruptive term, with particular reference to sickness and isolation for both staff and students. This also will include the ongoing need to support teaching and learning at school, from home and school, and if the situation evolved, from fully beyond the school gate.

For our new community members, we use the newsletter to give you up-to-date information on a weekly basis about the general happenings within the school. We will also use this forum to highlight recent student achievement, and significant up-coming events.

To start the ball rolling, last Tuesday we had our traditional pōwhiri 'outside'. This is our way of formally welcoming all new students and staff to the school. Following this, we moved into our orientation programme, which is particularly important for transitioning our Year 9 students. I am very grateful to the Year 13 Peer Support leaders for their involvement in supporting the Year 9's. The initial three day programme is about integrating the students into the school's systems, culture, and expectations. The Peer Support programme continues on throughout the first term.

Wednesday and Thursday saw the remaining year levels return to school, briefly, to allow us the opportunity to welcome them back, and start the process of analysing our student numbers. Our returning numbers have been very good, particularly in the senior school, with a number of new in-zone students changing schools to attend Papanui High School, and also more current students deciding to stay at school and build on their success. This year our Year 9 cohort is approximately 360, our largest on record, and will contribute to our total school roll size being also at a record high!

Increases in our school numbers can also bring some challenges, including timetabling. The school timetable is based on maximizing subject choice on a majority "best fit" basis. Student numbers are particularly important because we need to assess class sizes and viability as we move to finalise students' timetables. Over the following week, classes will need to be balanced, additional classes potentially added, and timetables adjusted as we work through this settling in process. We are working through this as quickly as possible, with the aim to minimise disruption and change.

We all know, and understand, this is a very challenging time, and we as a school will continue to try and do our best to manage and navigate the path ahead. In saying that, on Friday it was great to see our full school back, students in class, and the process of learning for 2022 begin.

Ngā mihi nui

Jeff Smith  
Principal

# Papanui High School 2022 Term Dates

## TERM ONE: Tuesday 1 February - Thursday 14 April

Monday 31 January Staff only day  
Tuesday 1 February Pōwhiri for new students  
Orientation programme begins  
Monday 7 February Waitangi Day observed - school closed  
Monday 28 March Summer Tournament week  
*104 half days*  
*School holidays are inclusive of Easter and ANZAC Day*

## TERM TWO: Monday 2 May - Friday 8 July

Thursday 12 May PPTA Accord Day - school closed for instruction  
Friday 3 June Staff only day - school closed for instruction  
Monday 6 June Queen's Birthday - school closed  
Friday 24 June Matariki Holiday - school closed  
*94 half days*

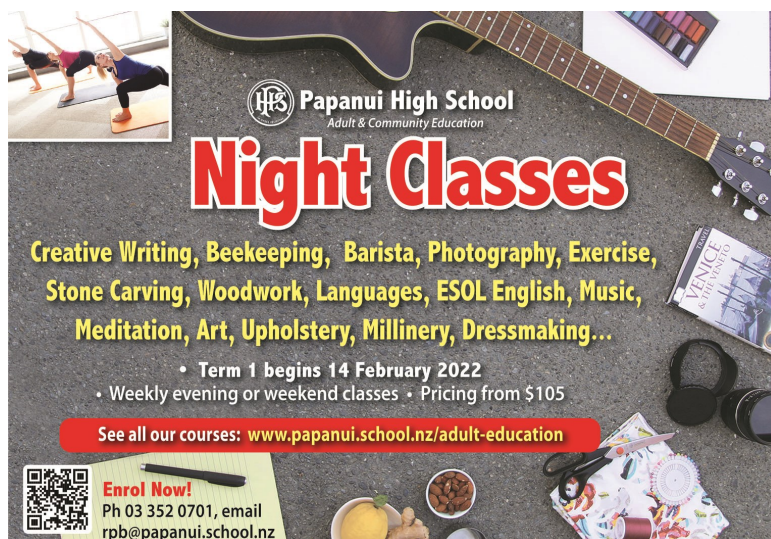
## TERM THREE: Monday 25 July - Friday 30 September

Thursday 11 August AC Conference Day  
Monday 22 August PPTA Accord Day - school closed for instruction  
Monday 29 August Winter Tournament week  
Monday 19 September Senior Assessment week  
*100 half days*

## TERM FOUR: Monday 17 October - Tuesday 13 December

Monday 24 October Labour Day - school closed  
Tuesday 1 November Senior Prizegiving  
Monday 7 November NCEA exams start  
Friday 11 November Show Day - school closed  
Monday 21 and ?? November PPTA Accord Days - School closed - TBC  
Tuesday 13 December Junior Prizegiving  
*80 half days*

*Total: 378 half days - required for 2022*



**Papanui High School**  
Adult & Community Education

# Night Classes

Creative Writing, Beekeeping, Barista, Photography, Exercise,  
Stone Carving, Woodwork, Languages, ESOL English, Music,  
Meditation, Art, Upholstery, Millinery, Dressmaking...

• Term 1 begins 14 February 2022  
• Weekly evening or weekend classes • Pricing from \$105

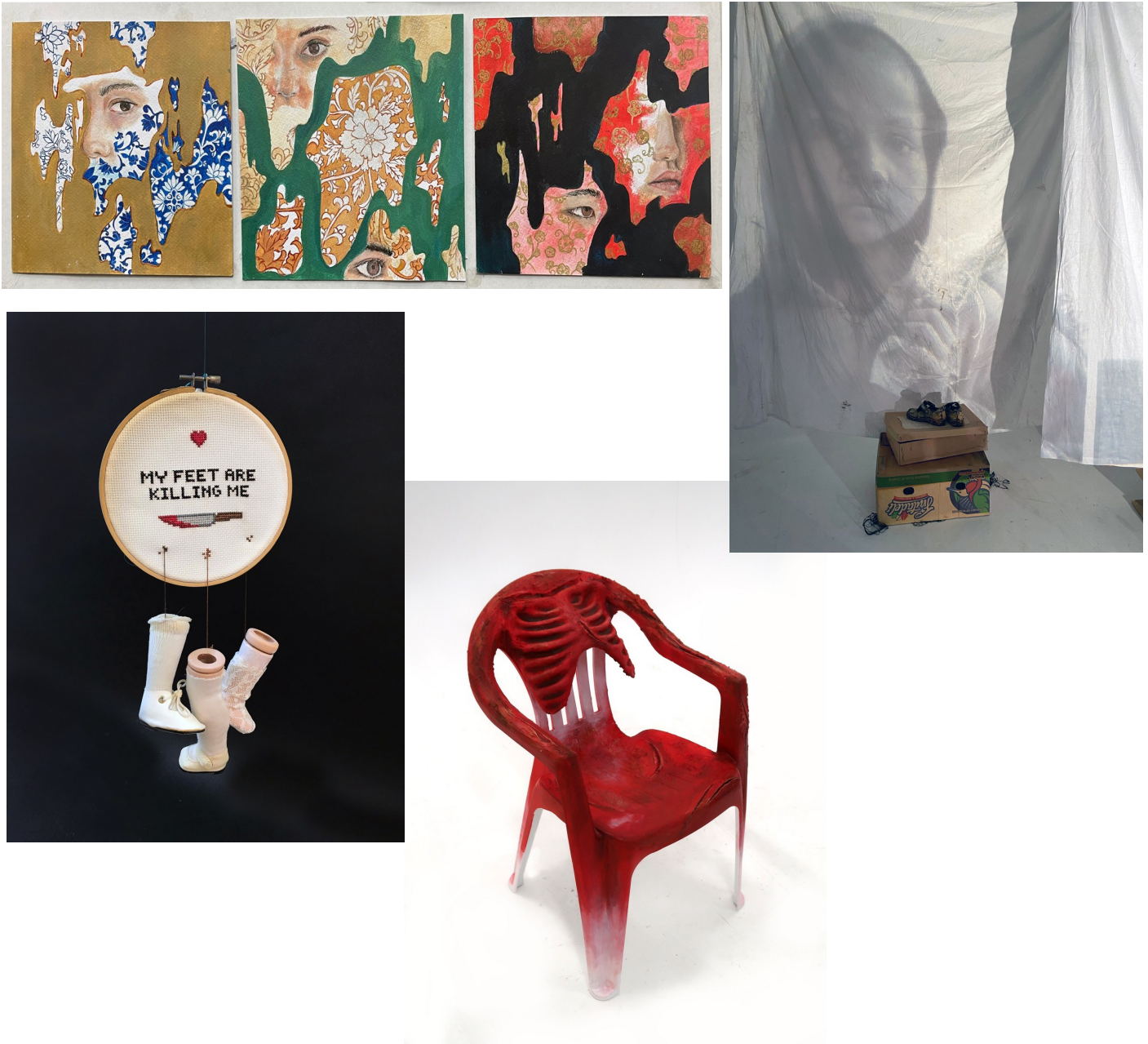
See all our courses: [www.papanui.school.nz/adult-education](http://www.papanui.school.nz/adult-education)

**Enrol Now!**  
Ph 03 352 0701, email  
[rpb@papanui.school.nz](mailto:rpb@papanui.school.nz)

## Congratulations

Congratulations to Kala Burgess, Ella Stewart, Vivien Silver-Hessey, and Jorja Shadbolt who are all finalists in the Zonta Ashburton Female Art Awards Young Generation category for 2022. The award winners will be announced at the exhibition opening on Friday, 18 March at 7.00pm at the Ashburton Art Gallery. Papanui High School has been the winner of the Young Generation Award for two years in a row, we wish the finalists luck for the awards announcement.

Mark Soltero  
Head of Department, Visual Arts & Art History



## School Policies

Our school policies can be found at <https://papanui.schooldocs.co.nz>

**Username:** papanui      **password:** pride



## PHS Adult and Community Education Classes Term 1, 2022

Papanui High School have vacancies in the following Night classes for Term 1 due to begin week of 14 February. Please note all tutors are required to be, and meet, the vaccination mandate. An Adult and Community Education Programme also requires that the 'students' attending must also be vaccinated. These will need verification on enrolment/first night attendance.

For further information and enrolment please visit our website <https://www.papanui.school.nz/com-edu/categories> or email Barbara Roper [rpb@papanui.school.nz](mailto:rpb@papanui.school.nz) or telephone our office on 03 3520701.

### **MONDAY NIGHT - Beginning 14 February**

Cake Decorating, Indian Cooking, French for Beginners, ESOL English, IELTS Preparation, Photography Beyond the Basics, Spanish for Beginners Part 2, Watercolour Painting, Yoga Beyond Beginners, Ukulele and Guitar Intermediate Level

### **TUESDAY NIGHT - Beginning 15 February**

Automotive Maintenance Intro Course, Beekeeping, Dressmaking, Japanese for Beginners, Meditation/Mindfulness, Sign Language Beginners, Spanish for Beginners, Stone Carving Beginners, Te Reo Maori Beginners Part 2, Yoga

### **WEDNESDAY NIGHT - Beginning 16 February**

Barista, Spanish Cooking, Dressmaking, Learn to Draw, Pilates for Improvers, Poetry for Beginners, Thai Cooking, Photography - how to take good photos using your phone

### **THURSDAY NIGHT - Beginning 17 February**

Barista Intro, Dressmaking, Chinese for Beginners, Sign Language Level 1b

### **WEEKEND COURSES**

Aromatherapy, Cheese Making, Healing Through Nature, Patchwork, Upholstery, Stone Carving Advanced



## Sports News

### **School sports news**

#### ***Term 1 Sport Summer Sport***

Term 1 summer sport registrations are open and the link can be found on the student notices, school sport facebook page (Papanui High School - sport) and has also been sent home to parents email addresses.

Registrations for this will close next Tuesday 8th February.

Permission slips can be picked up from the sports office. Permission slips must be handed in before your first game.

#### ***Student Achievements***

Have you competed in a Sports Competition lately? Send your story and results (with pictures if possible) to Paige [hrp@papanui.school.nz](mailto:hrp@papanui.school.nz) in the Sports Office.

*This is a great way to showcase what our students are doing outside of school in sport with our community.*

## Community Sport News



**SHUTTLE TIME** NEW ZEALAND

Give your child the opportunity to play the world's fastest growing racquet sport – Badminton!  
No experience necessary as quality coaching is provided.

First session is free with no pressure to sign up for the term – come along and give it a go.  
Suitable for children 8 years old and above  
Coach - Tom

Register online at:  
[https://badmintoncanterbury.com/play-badminton/junior-and-age-groups/shuttle\\_time\\_after\\_school\\_programme](https://badmintoncanterbury.com/play-badminton/junior-and-age-groups/shuttle_time_after_school_programme)

**Children's badminton**  
Wednesday's  
**YMCA Bishopdale**  
13a Bishopdale Court, Bishopdale

8+ year olds, 3.30 – 5.00pm

Commence 9<sup>th</sup> Feb  
8+ year olds, \$80

No sessions on public holidays



### Canterbury Cricket - YEAH! Girls SMASH

Canterbury Cricket will be running a Yeah! Girls SMASH hub at Bishopdale Park on Monday afternoons. Yeah! Girls SMASH is fun social modified cricket for all girls year 7-10 regardless of previous experience. All girls get an equal chance to bat, bowl and field, the emphasis is more on learning new skills and having fun with friends. Please see attached poster and the link below for more info and to register: <https://www.yeahgirls.nz/south-island-1>



Canterbury School Sport

**Download the School Sport Canterbury app**

Download on the App Store

ANDROID APP ON Google play

Paige Hubber  
Sports Co-ordinator  
[hrp@papanui.school.nz](mailto:hrp@papanui.school.nz)

## Become Digital Savvy for FREE with Ara Connect



**Become digital savvy with Ara Connect**

Free and affordable computing courses, available here at PHS.

For details visit:  
[ara.ac.nz/study/community-study](https://ara.ac.nz/study/community-study)

Riki  
(Ngāti Porou, Ngāpuhi)  
Ara graduate

**Ara**  
Institute of Canterbury  
140 The Terrace, Christchurch

Becoming 'digital savvy' is easy and **FREE** thanks to the school's partnership with Ara Connect. Now, you can learn how to use devices like smart phones and tablets, and gain skills in tools such as email, Word, Excel, PowerPoint and Google Docs for personal or professional use – right here at school. Ara Connect lets you study at your own pace and fit your learning around work, family and other commitments. To find out more or to enrol for your first class, phone Ara on 0800 24 24 76 or email [araconnect@ara.ac.nz](mailto:araconnect@ara.ac.nz) or visit <https://www.ara.ac.nz/study/community-study/>.

*My School, My Success, My Responsibility  
Tōku Kura, Tōku Tiketike, Tōku Haepapa*