



Principal's Perspective

Kia ora,

We continue to keep a watching brief in relation to Covid-19/Omicron with updates being posted on our website as required. We are currently working on a range of plans for curriculum delivery to support the on-going learning of our students given the potential disruption forecasted ahead. We will start the process of informing our students what this will look like through our zoom assemblies from next week.

It was wonderful to see the whole school back into fully timetabled classes this week. Since the new school year started we have continued to have additional in-zone enrolments which on many levels is very pleasing for us as a school, however, it does come with some need to adjust and balance class sizes. We are working through this as quickly as possible, with the aim to minimise disruption and change. However, in saying that, some changes and compromises may still need to happen.

MEET AND GREET EVENING —17th February— Cancelled. Normally this would be a face to face opportunity for parents/whānau of Years 10 — 13 students to meet subject teachers, and get an insight into the teaching, learning, and assessment programme for the year. Given our current circumstances we have had to reconsider how we will structure this event. As it is not possible to have parents/whānau onsite, we will be sending you the relevant information.

Towards the end of February the New Zealand Qualifications Authority (NZQA) will confirm our NCEA results for 2021, and I look forward to sharing that with you.

PAID UNION MEETING—on Thursday 24th February, Papanui High School teachers will be attending a paid union meeting. The right to hold a meeting of this nature is contained in the Secondary Teachers' Collective Employment Agreement. All Union members are expected to attend.

Accordingly, **on Thursday 24th February the school day will finish at the end of Period 4: 12.25pm**

If you wish to have your son/daughter supervised during afternoon school hours please register with the school office (phone: 352 6119)

Having had a short week with Monday's public holiday for Waitangi Day now behind us, we look forward to our first full week, with everyone back at school, and settling into a busy and exciting term ahead.

Ngā mihi nui

Jeff Smith
Principal

Papanui High School 2022 Term Dates

TERM ONE: Tuesday 1 February - Thursday 14 April

Monday 31 January Staff only day
Tuesday 1 February Pōwhiri for new students
Orientation programme begins
Monday 7 February Waitangi Day observed - school closed
Monday 28 March Summer Tournament week
104 half days
School holidays are inclusive of Easter and ANZAC Day

TERM TWO: Monday 2 May - Friday 8 July

Thursday 12 May PPTA Accord Day - school closed for instruction
Friday 3 June Staff only day - school closed for instruction
Monday 6 June Queen's Birthday - school closed
Friday 24 June Matariki Holiday - school closed
94 half days

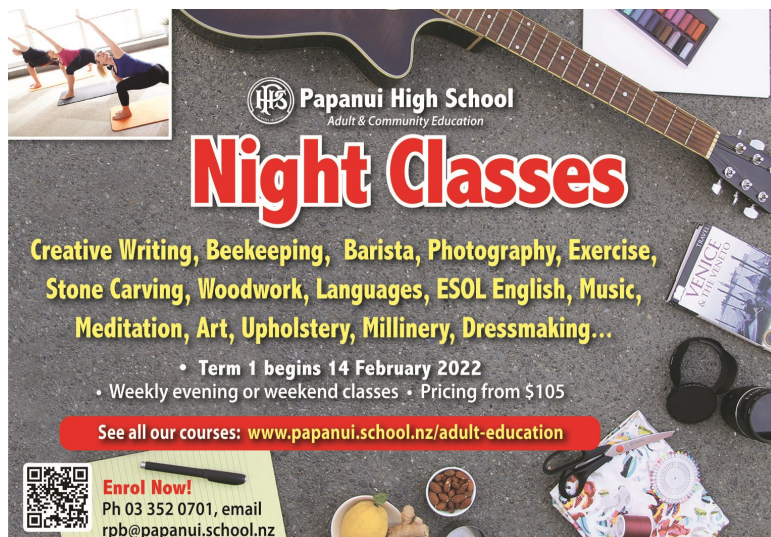
TERM THREE: Monday 25 July - Friday 30 September

Thursday 11 August AC Conference Day
Monday 22 August PPTA Accord Day - school closed for instruction
Monday 29 August Winter Tournament week
Monday 19 September Senior Assessment week
100 half days

TERM FOUR: Monday 17 October - Tuesday 13 December

Monday 24 October Labour Day - school closed
Tuesday 1 November Senior Prizegiving
Monday 7 November NCEA exams start
Friday 11 November Show Day - school closed
Monday 21 and ?? November PPTA Accord Days - School closed - TBC
Tuesday 13 December Junior Prizegiving
80 half days

Total: 378 half days - required for 2022



Papanui High School
Adult & Community Education

Night Classes

Creative Writing, Beekeeping, Barista, Photography, Exercise,
Stone Carving, Woodwork, Languages, ESOL English, Music,
Meditation, Art, Upholstery, Millinery, Dressmaking...

• Term 1 begins 14 February 2022
• Weekly evening or weekend classes • Pricing from \$105

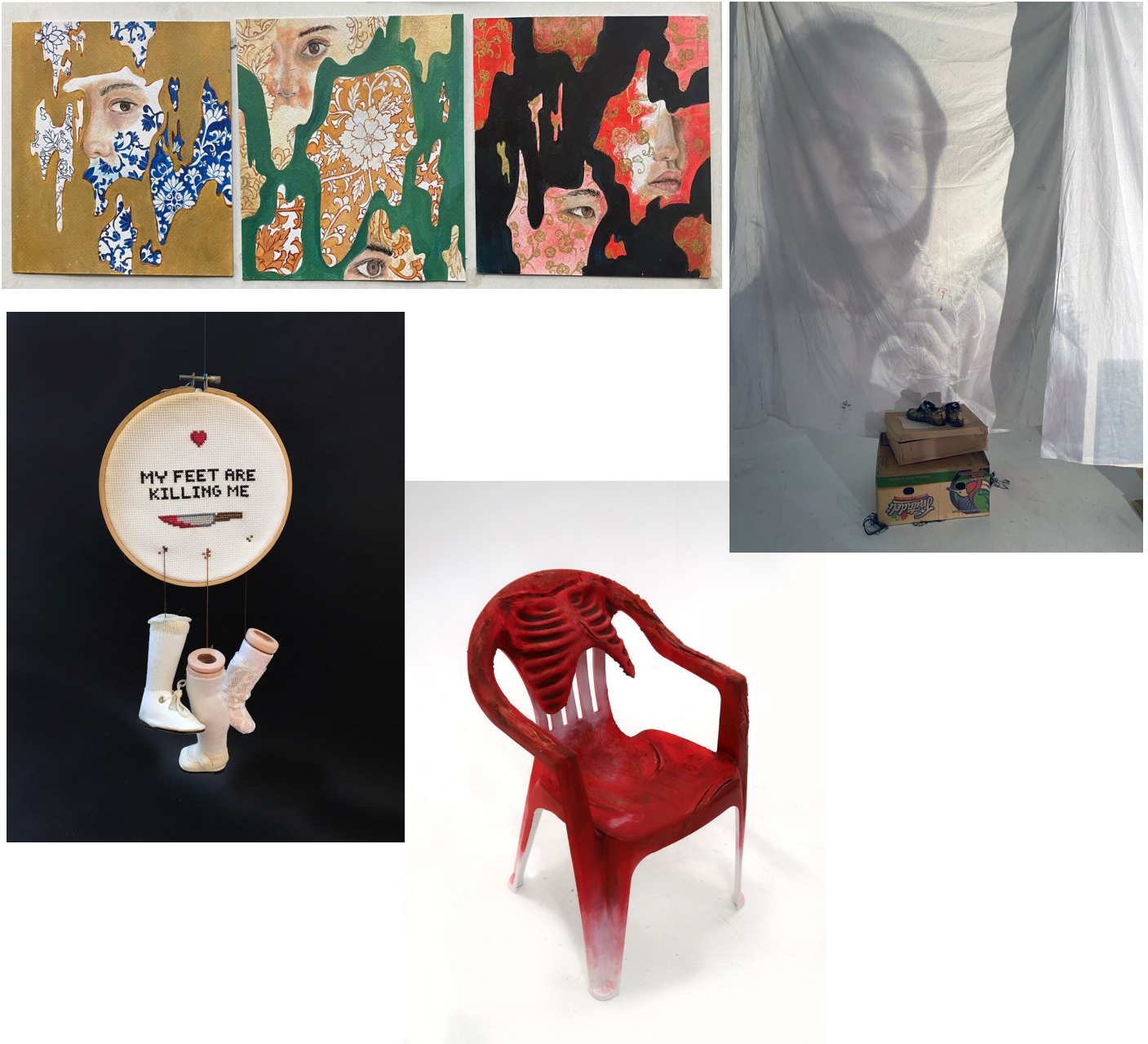
See all our courses: www.papanui.school.nz/adult-education

Enrol Now!
Ph 03 352 0701, email
rpb@papanui.school.nz

Congratulations

Congratulations to Kala Burgess, Ella Stewart, Vivien Silver-Hessey, and Jorja Shadbolt who are all finalists in the Zonta Ashburton Female Art Awards Young Generation category for 2022. The award winners will be announced at the exhibition opening on Friday, 18 March at 7.00pm at the Ashburton Art Gallery. Papanui High School has been the winner of the Young Generation Award for two years in a row, we wish the finalists luck for the awards announcement.

Mark Soltero
Head of Department, Visual Arts & Art History



School Policies

Our school policies can be found at <https://papanui.schooldocs.co.nz>

Username: papanui **password:** pride

PHS Adult and Community Education Classes Term 1, 2022

Papanui High School have vacancies in the following Night classes for Term 1 due to begin week of 14 February. Please note all tutors are required to be, and meet, the vaccination mandate. An Adult and Community Education Programme also requires that the 'students' attending must also be vaccinated. These will need verification on enrolment/first night attendance.

For further information and enrolment please visit our website <https://www.papanui.school.nz/com-edu/categories> or email Barbara Roper rpb@papanui.school.nz or telephone our office on 03 3520701.

MONDAY NIGHT - Beginning 14 February

Cake Decorating, Indian Cooking, French for Beginners, ESOL English, IELTS Preparation, Photography Beyond the Basics, Spanish for Beginners Part 2, Watercolour Painting, Yoga Beyond Beginners, Ukulele and Guitar Intermediate Level

TUESDAY NIGHT - Beginning 15 February

Automotive Maintenance Intro Course, Beekeeping, Dressmaking, Japanese for Beginners, Meditation/Mindfulness, Sign Language Beginners, Spanish for Beginners, Stone Carving Beginners, Te Reo Maori Beginners Part 2, Yoga

WEDNESDAY NIGHT - Beginning 16 February

Barista, Spanish Cooking, Dressmaking, Learn to Draw, Pilates for Improvers, Poetry for Beginners, Thai Cooking, Photography - how to take good photos using your phone

THURSDAY NIGHT - Beginning 17 February

Barista Intro, Dressmaking, Chinese for Beginners, Sign Language Level 1b

WEEKEND COURSES

Aromatherapy, Cheese Making, Healing Through Nature, Patchwork, Upholstery, Stone Carving Advanced



Become Digital Savvy for FREE with Ara Connect

Become digital savvy with Ara Connect

Free and affordable computing courses, available here at PHS.

For details visit: [ara.ac.nz/study/community-study](https://www.ara.ac.nz/study/community-study)

Riki
(Ngāti Porou, Ngāpuni)
Ara graduate

Ara
Institute of Canterbury
ara.ac.nz

Becoming 'digital savvy' is easy and **FREE** thanks to the school's partnership with Ara Connect. Now, you can learn how to use devices like smart phones and tablets, and gain skills in tools such as email, Word, Excel, PowerPoint and Google Docs for personal or professional use – right here at school. Ara Connect lets you study at your own pace and fit your learning around work, family and other commitments. To find out more or to enrol for your first class, phone Ara on 0800 24 24 76 or email araconnect@ara.ac.nz or visit <https://www.ara.ac.nz/study/community-study/>.

*My School, My Success, My Responsibility
Tōku Kura, Tōku Tiketike, Tōku Haepapa*