



Principal's Perspective

Kia ora,

We have just completed Week 6, which is just over half way through the first term. I'd like to commend our students and staff for the manner in which they are collectively doing their best to meet the challenges of this term thus far. Our last EOTC trips for the short-term occurred this week with Year 11 NCEA Physical Education classes completing their surfing practical at Sumner beach. On a positive note we have been able to set a platform for our curriculum delivery, and this will help significantly as we negotiate the second half of this term.

Student attendance remains comparatively good with at least 76% of students being present. The number of students who are confirmed cases up until this point remaining relatively low. They are evenly spread amongst Year 11-13 and very low in Year 9 and 10. This would indicate that there is not widespread transmission within the school. Unfortunately we have experienced the impact of Covid through our staff and relief teaching pool, and this has necessitated our need to roster each year level of students home for one day a week (please see the specific information relating to this below).

Covid Response—Teaching and Learning Week 7 and 8

From Monday 14th March the school will move into a combined model of on and off site learning, inclusive of rostering home. The table below indicates which year level will be rostered home each day. For the other four days, students will attend as normal. By reducing the number of students physically at school each day, we can redistribute our staff to cover the remaining year levels on site. At this stage we would like to run this for the next **two weeks** to be reviewed during Week 8, with the aim to inform our community of any potential changes.

| Monday | Tuesday | Wednesday | Thursday | Friday |
|---------|---------|-----------|----------|---------|
| Year 12 | Year 10 | Year 11 | Year 9 | Year 13 |

Teachers who are at school will be working with students in class every day including covering for absent colleagues. Therefore, they will not be able to actively teach students on the day they are rostered home. Senior students have been informed as to how they can continue with their classwork, on their rostered home day. Junior students will enter a phase of **'hybrid learning'** which they have been shown how to access online, whether they are at school or at home

We are continuing to provide online content for those students who are isolating at home and, who feel well enough to access it.

If you are unable to supervise your student at home on their rostered day off and you need them to come to school please telephone the school office on 352 6119.

Covid Phase 3 Update: Important changes to Isolation requirements

From 11:59pm Friday 11th March, isolation requirements for positive cases of Covid-19 and their household contacts will be reduced from 10 to seven days. If you are currently in isolation you will not have to do Day 8, 9, or 10.

Additionally, recovered Covid cases no longer need to isolate if they become a household contact within 90 days of having the virus.

Cases

- Anyone who tests positive for Covid 19 will be required to isolate for 7 days.
- Day 0 is the day symptoms began or the day the test was taken (whichever came first)
- Cases will isolate for a full seven days and are free to return to normal activities on Day 8 if they are not symptomatic.

Household Contacts

- Are required to isolate for the same 7 days as the case.
- Are required to take a RAT test on **Day 3 and Day 7** of the case's isolation period.
- Can return to normal activities on the same day as the first case in the household if their test results have been negative and they are not symptomatic (please monitor for symptoms up to Day 10)

PLEASE NOTE: Students and staff who test positive for Covid-19 are not required to self-isolate past seven days under public health regulations, but they should **not return to school if they are still feeling unwell.**

In line with Ministry of Education advice we are committed to keeping school open for on-site learning as much as we can. We are keeping a constant eye on the situation, and will continue to provide you with updates as appropriate. We would appreciate if you could please keep notifying us of any positive Covid cases or household contacts by emailing covidresponse@papanui.school.nz

Ngā mihi nui
Jeff Smith
Principal

PTA Annual General Meeting

Notice of the PTA Annual General Meeting.

The PTA will be holding its AGM on **Monday 21st March**, 7.00pm in the staff room (upstairs in the Admin block).

This will be a brief meeting to elect office holders and review PTA work over the past 12 months. Our regular meeting will be held after the AGM.

All interested whānau, parents, and caregivers are most welcome to attend to find out more about the role of the PTA at school.

IMPORTANT INFORMATION for the next meeting: The PTA operates outside of the school hours and as such must adhere to the COVID-19 Protection Framework (traffic lights system) currently in force. This means the PTA meeting is classified as a gathering event, and as it will be held indoors, and the expected numbers would be above 25, all people attending must have a Covid vaccination pass and wear a mask.

PTA Uniform Sale

The PTA are holding the following sale.
We volunteer to support you and raise funds for your children.

Thursday 24 March

Doors open: 6:00pm

Sale ends: 7:00pm (last entry: 6:50pm)

Location: school hall

Payment by cash and debit card

Uniform to be included in sale must be handed in at school office by Wednesday 23 March, 2.00pm.

Any questions, see our webpage on the school website, under "Our School". For other second-hand uniform matters, please contact Claire: PHS.PTA.SHU@gmail.com (Please do not contact the school)

Youth Art Library Display

The Papanui Community Library approached the PHS Art Department recently asking if we could supply examples of student artwork for display in their youth area. We thought this offered a great opportunity to get student work into the public arena. The library felt that their youth area noticeboard needed vamping up and we are very happy to supply work from our wealth of talented students. We view this as a great collaboration and a win/win for both the community and our students.

We'd like to thank the Library for inviting us to contribute and we are looking forward to supplying regular updates of work throughout the year. The first display is focusing on photography from a selection of our senior students, and features two works from recently graduated student Mikayla Higgs, two works from Year 12 student Imogen Thornfield, and one work from Vivien Silver- Hesse. Vivian's work is also a finalist in the 2022 Zonta Ashburton Female Art Awards (ZAFAA) which opens on March 18. Papanui has four students accepted as finalists this year. We have won the Youth Award in both 2020 and 2021, so the pressure is on for a trifecta - keep your fingers crossed and please check out the library youth noticeboard on your next visit.



Cando Cards

Cando cards are produced by Ecardz on behalf of Metro Buses. The card acts as a student identification (providing proof of age/identity) and metro card, but also allows students to access a number of exclusive discounts at retailers and services in the Canterbury area. In 2022 the card can also be registered for contact tracing.

Cando cards will be available to purchase by ALL students for a cost of \$10. Students can collect a Cando card envelope from the student, complete the appropriate information, insert the payment, and return it to the slot in the student office.

The office is not able to provide electronic payment for the cards, nor can they transfer funds from student accounts. Please ensure that correct payment is placed in the envelope



Last opportunity

Photos will be provided by Photolife. Year 9 photos will be from 2022, Year 10 -13 photos will be from 2021. If a student is unsure if they have a photo, they can check at the student office, and see Miss McConnell (mcr@papanui.school.nz) if they don't.

Visit www.candocard.co.nz for more info.

Wanted - Business Studies Mentors for 2022

Wanted - Business Studies Mentors for 2022

Do you have your own business or specialist skills in business eg marketing, sales etc?

We would love some volunteers to use their business experience to give advice to Papanui High Year 12 and 13 student business groups, especially with the development of their idea, business plan and to support them in bringing their product or service to the market.

Ideally you will be able to check in with groups during class time in Term 1, 2 and 3, preferably two or three times each term and be available to support and answer questions at times during the year. Currently this would have to be done online however in future this could include coming into school if our COVID status allows.

If you are able to help our students have an authentic business experience, please contact Andrea Gallop gla@papanui.school.nz

From the Careers Department

Moneyhub are a group that offer information and advice to students.

The research team at Moneyhub have prepared a concise checklist for Year 13 students finishing school at the end of this year.

Checklist for Year 13 students: <https://www.moneyhub.co.nz/year-13-checklist.html>

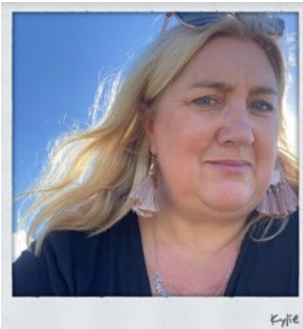
Understanding what comes after school is often uncertain, and this guide may hopefully be able to give students some ideas they can take on board as they prepare for transition out of school.

Student Support

Good wellbeing / hauora is a super important part of each of us realizing our potential. For most of us, most of the time, we do the things we need to, to look after our hauora. Sometimes when life gets difficult, we can need additional support. It is ok to reach out for help.

The role of Student Support at Papanui High School is to help support the hauora of our young people / rangatahi, in particular their mental and emotional wellbeing / hinengaro.

Meet the team.



Cameron Dixon email dcc@papanui.school.nz
Steven Shaw email shs@papanui.school.nz
Casey Brown email bwc@papanui.school.nz
Meg Temple email tmm@papanui.school.nz
Kylie Phaups-Stephens (assistant) studentsupport@papanui.school.nz

Some of the common things students want support with include;

- School related stress
- Relationships / friendships
- Mood; anger, low mood, anxiety, grief
- Identity

The Student Support team is happy and able to connect with students in different ways. This can be helpful given the hybrid learning environment we find ourselves in. If your young person is at home learning, we can connect with them by zoom conference, text messaging, email, or a phone call.

There is a Student Support web page link on the Papanui High School web site. You can find out more about the team and Student Support there. The web page also has a referral doc so students can make an appointment online. If you have any concerns about the wellbeing of your young person, please make contact with their Dean, or let the Student Support team know via email.

Sports News

Term 1 Summer Sport

This term, the competitions in which we have entered our Term 1 sports teams into are not recording the scores of each game and as such there is no leader board for each sport/grade due to the disruptions caused by Omicron. Therefore, results will not be posted in the community newsletter this term.

Student Achievements

Have you competed in a Sports Competition lately? Send your story and results (with pictures if possible) to Paige (hrp@papanui.school.nz) in the Sports Office.

This is a great way to showcase what our students are doing outside of school in sport with our community.

Mainland Volleyball Championships

Our Premier girls and Senior boys Volleyball teams competed in the Mainland Volleyball Championships held here in Christchurch last week. Both teams had some great wins and some close loses against teams from all over the South Island. Our girls team came 3rd in Division 2 while our boys team came 4th in Division 2. Well done to both teams!

Community Sport News



Important Information

Any students who are keen on purchasing Papanui High School sports gear can be done via the link below. Payments are done through the website and then are sent directly to you.

Please Note: students are not permitted to wear sports gear instead of school uniform.

<https://withers-merch-shop.myshopify.com/.../papanui-high-sch...>

School Policies

Our school policies can be found at <https://papanui.schooldocs.co.nz>

Username: papanui password: pride



*My School, My Success, My Responsibility
Tōku Kura, Tōku Tiketike, Tōku Haepapa*