



### Principal's Perspective

Kia ora,

Monday evening saw the first PTA meeting for the year. It was great to see a number of new parents joining the committee. We would also like to acknowledge the parents who have come back to support the school for another year. The PTA is a very valuable component within our school structure, and I am appreciative of their contribution and their comment, as a sounding board in relation to current and future initiatives that the school seeks feedback about. If you'd like to find out more about the PTA please contact Amanda at [Pta.chair@papanui.school.nz](mailto:Pta.chair@papanui.school.nz)

Week 4 is now complete, and staff and students will be well and truly settling into the routine of teaching and learning. This week, Year 9 and 10 students received their first Engagement Reports for the year, and Year 11 to 13's will receive theirs next week. Following this, Engagement Reports will be sent home each week, alternating between junior and senior reports. We know when students are engaged in their learning, they give themselves the greatest opportunity to succeed.

As we move into 2023 we welcome the opportunity to hopefully return to our broader context of curriculum delivery. Learning beyond the four walls of a classroom is an important component of what we do here. The importance of including authentic and enhanced learning opportunities is critical to support student engagement, and to potentially see the 'bigger picture' of what the learning means and/or where it might fit with their future aspirations. Alongside class curriculum is the school's co-curricular programme, which is also gathering momentum as the various councils and committees are under way, and students become involved in an extensive range of activities.

As we near the end of February, we are reminded that New Zealand is vulnerable to a range of weather conditions. Christchurch has certainly had some hot weather over the last month, and the cooler change towards the end of this week reminds us how rapidly a change can occur. When weather conditions are adverse, we will do our best to inform the school community as quickly as possible. If this is going to affect the school day; in the first instance information will be posted on the school's website, followed by the school app. In extreme situations we would also email and text message.

In saying this, our thoughts are with the many communities up North as they recover and move forward from the recent weather events. We are also aware that many people in our community will have personal connections in relation to this and we are thinking of you also. Our school will be looking to ways in which we can tangibly show our support for those up North over the coming weeks.

Ngā mihi

Jeff Smith  
Principal

### Secondary Teachers Set Date For First National Strike - Thursday 16 March

Last year teachers began negotiations for their collective agreement. At Paid Union Meetings at the end of last year, members agreed on a one-day national strike if they felt there was no satisfactory progress with their collective agreement. As such all secondary school teachers in New Zealand will hold a national one-day strike on Thursday 16 March. As no PPTA members will be available for teaching duties on that day it will not be possible to run normal classes.

For any students who do attend, supervision will be arranged. Please phone the school office (on 352 6119) if you require supervision for your child.

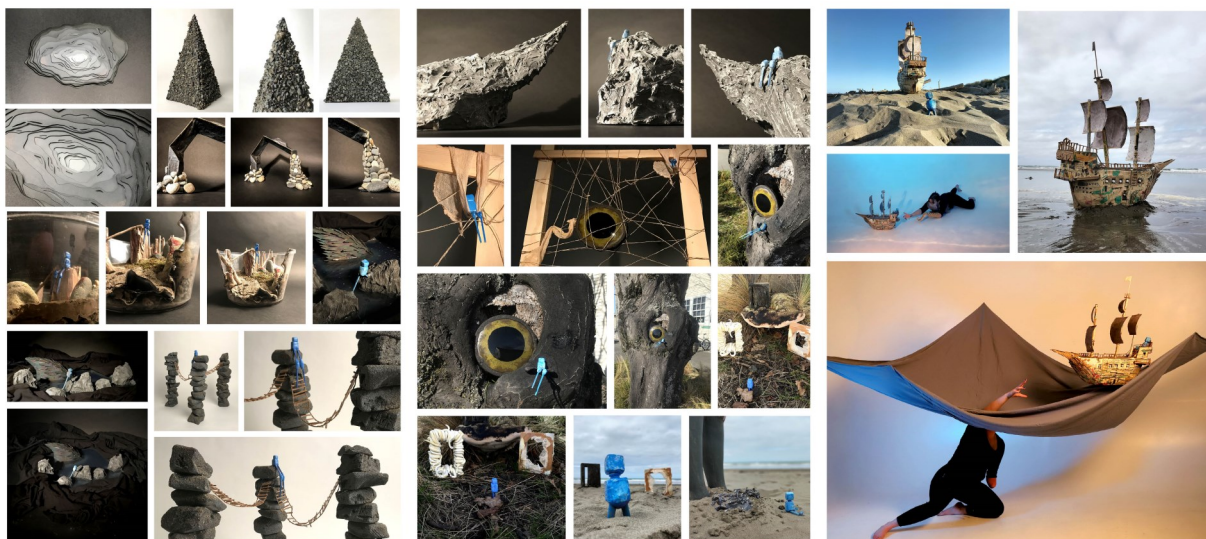
## Congratulations

Congratulations to Vivien Silver-Hessey and Jorja Shadbolt (graduating class 2022).

Both of these Art students had their art folios selected from the entire Level 3 submissions throughout New Zealand as Top Art folios.

They will now go on tour with a selection of other Level 3 Art folios deemed to be worthy of exhibiting across the nation at Christchurch Art Gallery Te Puna o Waiwhetū 3 April - 14 April

Anjie Connon  
Art Department



## School Policies

Our school policies can be found at <https://papanui.schooldocs.co.nz>

**Username:** papanui      **password:** pride





## Year 13 Biology Trip

On Monday our Year 13 Biologists visited the Groynes to spend the day sampling the populations of macroinvertebrates in the freshwater there. This is part of their internal assessment which requires them to design and implement an investigation themselves. We were extremely lucky with the weather and they had a thoroughly enjoyable day collecting samples from the stream. It is wonderful to gain practical skills in the context and to obtain real data relevant to their local area.

Sarah Hanlon  
HOD Science



## From the Careers Department

### Careers News

#### School based news

Senior students changing courses: From Week 5 onward any course change recommendations must start with the HOD of a subject you are struggling with or with your year level Dean.

#### Events outside of school

##### Experience Ara

There are a number of opportunities for students to learn about courses offered at Ara-Te Pūkenga through their Experience Ara programme. This month areas such as Drama, Construction, Engineering, Architecture, Sports Science, and Animal Science all have events coming up. For more information go to our school Careers website <https://papanui.careerwise.school/> or visit the Ara website <https://www.ara.ac.nz/study/youth-pathways/experience-ara/>

##### University of Auckland

Attention Year 11's interested in science and maths, capable, creative, problem solvers, team players and leaders. Women in Engineering camp from 19th April, 2023 to 21st April, 2023. For further details see the Careers department website. Then come and see us in the Careers area if you are interested in attending.

##### Go with Tourism

Go with Tourism have launched a brand-new student webpage, dedicated to resources, links and advice that can assist young people gearing up towards their future careers in the Tourism industry.

Here you will find work experience opportunities, mentorships, part-time jobs and more! <https://www.gowithtourism.co.nz/students>

## Sports News

### Recognition

We enjoy hearing how our students get on in their chosen sport outside of school. Please let us know as we are always keen to share your success and celebrate your achievements with you!

Any questions regarding sport, please come to the sports office or email [lms@papanui.school.nz](mailto:lms@papanui.school.nz)

### Student Achievements

Congratulations to Ava Watts who has been selected in the U17 Te Waipounamu Māori Netball Tournament to compete at the 34th AMNOHL National Tournament held in New Plymouth over Easter. We look forward to hearing how you get on Ava.

Congratulations to Breanna Spink and Bella Prince who are part of the Cure Rowing Club's novice women's crew that won a gold medal at the recent New Zealand rowing champs. The girls have been training 5 times a week since October 2022.

### CRICKET 1ST XI - GILLETTE CUP PRELIMINARY TOURNAMENT

On Tuesday 21st November the Papanui High School Boys' Cricket 1st XI took part in the Gillette Cup Preliminary Tournament held at Hagley Park on the hottest day of Summer.

The boys first game was against Cashmere High School which was a great first game but unfortunately the boys went down by 24 runs. Finn Kerr (Captain) had a great knock of 55 with the bat.

Papanui then went on to face Hillmorton High School. The Papanui boys bowled well and had Hillmorton all out for just 82 runs resulting in a good win to Papanui.

The third and final game of the day was against Riccarton High School, Papanui had them all bowled out for 67 and then chased it down with just 2 wickets lost in 7 overs.

Papanui ended up finishing 2nd in their pool, a great effort by the 1st XI Cricket team.

A special thanks to Grant and Ben MacLennan (Coaches) and Luke Germon.

### Papanui High School Girls Water Polo

Well done to the Papanui High School Girls' Water Polo team who beat Marian College 10-6 in their second game of the season in the Canterbury Secondary Schools' Senior A Grade Competition on Tuesday evening. It was a great team game and fantastic to see the confidence growing amongst the Year 9 girls.



## PTA Uniform Sales - Please note

Dear PHS Whānau,

The PTA would like to thank those who supported the recent second-hand uniform sale by providing, donating, and purchasing uniform items. As usual, this was very well attended, and it is great to see students being set up for the year ahead.

In the past, we have accepted second-hand uniforms for sale throughout the year and processed them for the next sale. It is with sadness that unfortunately we are not currently in a position to do this, so there will be an immediate and indefinite pause on accepting uniforms for sale. This is a result of ongoing issues outside of our control.

We hope to bring you more sales later in the year, as we want to honour the sellers who have entrusted us with their items, and we recognise the vital service the second-hand uniform shop provides.

Currently, we can only accept shoes and socks. There is always a need for quality, second-hand shoes. Shoes and socks are never sold, only given away.

On behalf of the PTA, Claire (uniform sales manager) and Amanda (PTA chair).  
[PHS.PTA.SHU@gmail.com](mailto:PHS.PTA.SHU@gmail.com)

## PTA Fundraiser

**Is your Membership expiring soon?**  
Or are you looking to have double the fun in 2023?


More time to enjoy  
the things you love


Limited time only  
**Bonus 2 month  
Membership  
extension\***


**Buy now**


\*Valid for 12 month memberships only. Terms and conditions apply.

**That's more time to play, dine  
& save with The Entertainment App**

  
**SAVE MORE THAN EVER**  
Double up on offers with a second Membership and use your favourite offers a second time



  
**THE MORE THE MERRIER**  
Use multiple offers for large group dining, activities, and experiences

  
**SHARE THE FUN**  
Share your Membership with up to 5 family members from individual devices


  
**OUR IMPACT**  
Donate another 20% of your sale to a fundraiser of your choice

**Buy now**

**Give a little something back  
to a cause close to you**

Your favourite fundraiser needs your support. We'll **donate 20%** of your purchase directly to



**Papanui High School PTA**

**Support now**

For more information  
email [support@entertainmentbook.co.nz](mailto:support@entertainmentbook.co.nz)

# Papanui High School 2023 Term Dates

## TERM ONE: Tuesday 31 January - Thursday 6 April

Monday 27 March Summer Tournament Week

Friday 7 April Good Friday - school closed

94 half days

## TERM TWO: Monday 24 April - Friday 30 June

Monday 24 April Additional MOE staff only day

Tuesday 25 April ANZAC DAY - school closed

Monday 5 June King's Birthday - school closed

96 half days *(The additional Staff Only Day is to support implementation activities across The NZ Curriculum Refresh, the redesign of Te Marautanga o Aotearoa and the NCEA Change programme)*

## TERM THREE: Monday 17 July - Friday 22 September

Monday 21 August Staff Only Day

Monday 28 August Winter Tournament Week

Monday 11 September Senior Assessment Week

98 half days

## TERM FOUR: Monday 9 October - Tuesday 12 December

Monday 23 October Labour Day - school closed

Wednesday 25 October Senior Prizegiving

Monday 6 November NCEA exams start

Friday 17 November Show Day - school closed

Tuesday 12 December Junior Prizegiving

92 half days

Total 380 half days

*My School, My Success, My Responsibility  
Tōku Kura, Tōku Tiketike, Tōku Haepapa*